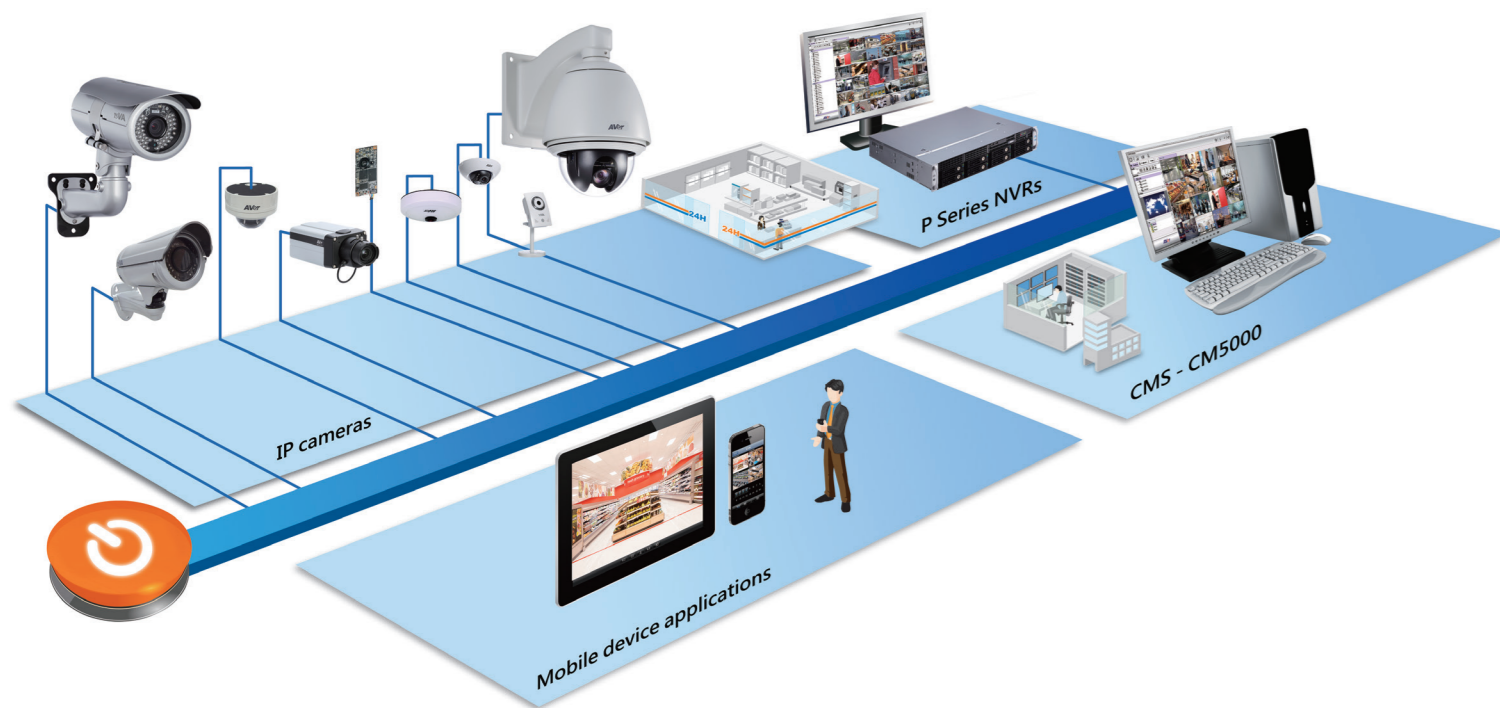


Next-generation full HD IP surveillance solution

POS integration · intelligent video analysis · Best bandwidth and storage management

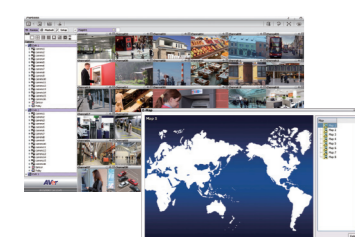
The seamless integration between AVer IP cameras, NVRs and central management software (CMS) not only provides reliability and enhanced performance but also guarantees easy setup thanks to the standardized user interface across all devices. Our wide range of IVA features including tampering detection and missing and suspicious object detection create an optimized solution for bandwidth and storage efficiency. And, with regularly scheduled feature and performance upgrades, expect your AVer IP surveillance solution to actually get better with age, allowing you to save more on bandwidth and storage investment.

- Full line of AVer IP cameras
- P-series & E-series NVRs
- Central management software CM5000



SDKs

Unified Software Development Kits available for AVer IP cameras and AVer NVRs make it much easier to integrate AVer solution components with any external systems. SDKs can significantly speed up the customization process, saving your time and efforts.



CM5000 CMS

The CM5000 central management software (CMS) is designed for remote management of AVer's next generation of NVRs. Users can leverage CM5000 to remotely control P-Series & E-series NVRs, including support for live preview, instant playback, settings adjustment, and E-maps. Full GUI standardization between local (NVR) and remote (CMS) sites ensures a low learning curve and smooth everyday operation.



Integrated Setup with Standardized UI

With the complete integration between AVer IP cameras, P-series & E-series NVRs and CM5000, all camera settings, including not only the basic ones like IP address, but also camera-embedded advanced options such as IVA features, motion detection or motorized focus/zoom (MFZ), can now be set directly via NVRs and CMS interface.

Central Management System CM5000

- Live monitoring of up to 36 camera channels per page (max. 4 pages)
- Standardized intuitive GUI, identical for local site (NVR) and remote site (CMS)
- Rapid search and user-friendly setup of NVRs
- Supports instant playback to effectively resolve sudden emergencies
- Advanced search functions: event search and visual search (by video snapshot timeline)
- Local backup of remote video feeds streamed from NVRs
- Up to 4096 E-maps with NVR, camera, sensor & relay icons supported
- Advanced alarm center with real-time notifications, e.g. e-mail, warning sound, relay on
- Full POS functionality support with transaction text overlay and data search
- Supports multiple monitors outputs (max. 4 monitors)
- Supports daily remote schedule backup



Video Intelligence

- Missing object detection: Alarm triggered when defined objects are removed from monitored zones, such as a painting taken off the wall at a museum or art gallery
- Suspicious object detection: Alarm triggered when objects are left alone for an extended period of time, such as baggage left unattended at an airport or railway station
- Tampering detection: Alarm triggered when there is an attempt to reposition or obstruct a monitoring camera, such as a vandal spray painting over the camera lens
- Visual search: Easily search by days, hours, minutes, and even seconds for recorded data on a selected channel
- PTZ tracking: Track moving objects from both local and remote locations

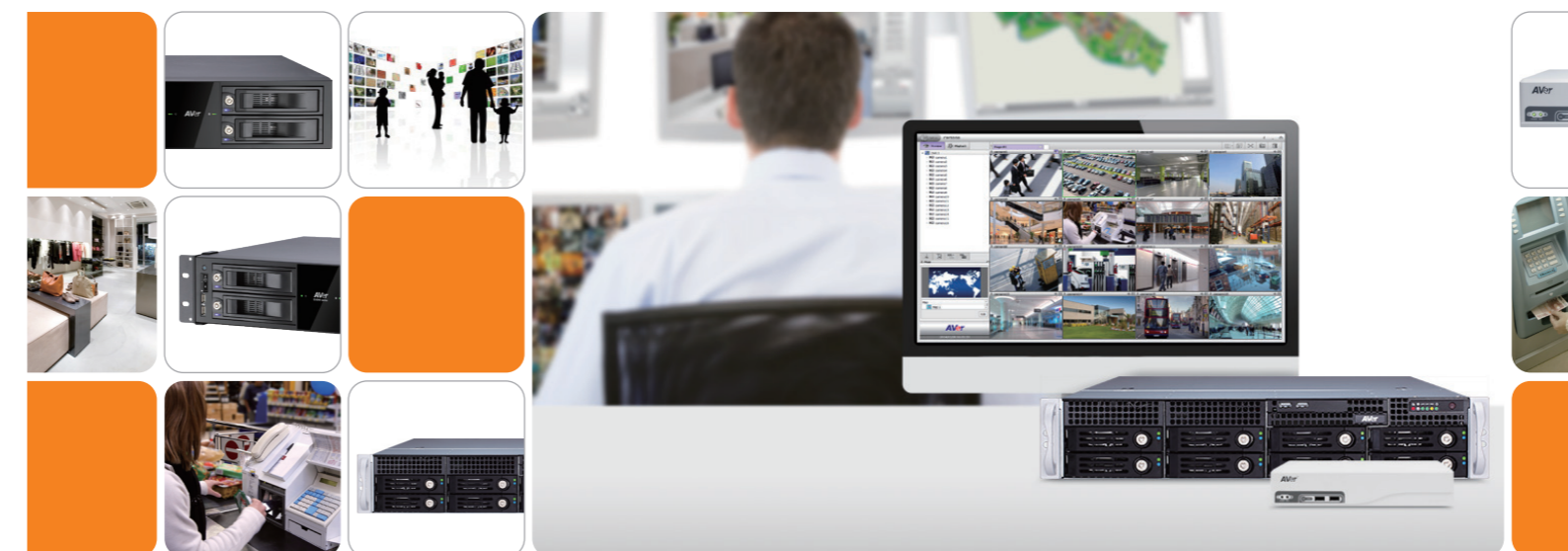


POS Integration

- Full compatibility with popular POS systems
- Easy management through the real-time POS data overlay on live video display
- Integrated confidential keyword filter for protection against employee tampering
- Use POS keywords to trigger notifications
- Adjust POS text location and font colors during video playback
- Search transaction data and playback video directly from the live monitoring screen through the advanced iPOS function (IWH / NV series)



NVRs Family Brochure



Q1 2015

AVer's complete retail solution

AVer's retail surveillance is the best choice for single shop or chain store owners all the way up to mall owners. Combining a rich portfolio of megapixel IP cameras, video management and central management software, AVer's retail surveillance solution assists shop owners to quickly increase their revenue and integrate the whole surveillance system seamlessly.



Smart Solutions for Complex Security Projects

AVer's wide range of complete surveillance solutions provides users with a variety of specifications and software support to accommodate the demands of most security projects. AVer's leading hybrid technology gives users the flexibility to support both megapixel IP cameras and analog cameras using the same NVR. This cost-effective approach allows for IP camera installation in critical areas and the use of analog cameras in less critical areas or areas with extensive analog infrastructures already in place. Users in search of a pure network solution can match AVer's array of megapixel IP cameras with our embedded NVRs, like the powerful, cost-saving Linux-based P Series & E Series NVRs. Completing AVer's smart security solutions is its advanced NVR software which ensures a friendly user experience and easy management of events through video footage clustering.



Intelligent Streaming

Through this unique feature of the AVer total surveillance solution, users can automatically achieve excellent image performance, especially during multi-channel preview.



Simplified Camera Settings

Users can individually adjust the video size and frame rate for every connected analog camera plus easily setup attached IP cameras through friendly features like hassle-free protocol searching for most major IP camera brands.



Advanced Alarm Settings

AVer's extensive real-time alarming conditions, such as motion detection and abnormal events, are easily set to trigger specific actions to address the situation, such as activating warning sirens, sending alarm notifications to the central management system (CMS), or launching an E-map or a specified camera image to draw the user's attention.

			8CH	16CH	36CH
NVR	Embedded Linux	Standalone	HDMI Full HD E1008 HDD x 1	HDMI Full HD E5016 RAID HDD x 4	HDMI Full HD P5036-R RAID HDD x 10
		Hybrid NVR	HDMI Full HD E1008H HDD x 1	HDMI Full HD E5016H RAID HDD x 4	HDMI Full HD P5036-16-R RAID HDD x 10



© 2015 AVer Information Inc. All rights reserved. All rights of this object belong to AVer Information Inc. Reproduced or transmitted in any form or by any means without the prior written permission of AVer Information Inc. is prohibited. All information or specifications are subject to change without prior notice. "AVer" is a trademark owned by AVer Information Inc. Other trademarks used herein for description purpose only belong to each of their companies. (201501)

Distributor/Dealer:



E1000-Series		E1008	E1008H
applications	Compact NVR designed for small- to medium-scale projects E.g. convenience stores, gas stations, boutiques		Compact NVR designed for small- to medium-scale projects E.g. convenience stores, gas stations, boutiques
feature overview	<ul style="list-style-type: none"> High performance with the stability of Linux Impressive 80 Mbps throughput rate Intuitive, easy-to-learn standardized GUI design Intelligent streaming support 		<ul style="list-style-type: none"> High performance with the stability of Linux Impressive 80 Mbps throughput rate Intuitive, easy-to-learn standardized GUI design Intelligent streaming support
system			
operating system	embedded Linux		embedded Linux
total channel number	8		8
max. IP camera input	8		8
max. analog camera input	N/A		8
performance			
display (analog)	N/A		240 / 200fps (NTSC/PAL)
display (IP)	2M @ 80fps		2M @ 80fps
recording (analog)	compression	N/A	
	resolution	N/A	
	frame rate (NTSC/PAL)	N/A	
recording (IP)	resolution	up to 5 megapixels for one channel, and a total of 16 megapixels for all channels in H.264 / MPEG-4 / MJPEG format	
throughput	60 Mbps		120 Mbps
storage	internal HDD capacity	1 SATA HDD	
	internal RAID support	-	
	external HDD support	e-SATA HDD x 1	
	iSCSI input	1 target, 4 lun	
backup	internal DVD-RW	- (supports external DVD-RW)	
interface			
monitor	VGA output	1 (1920 x 1080)	
	HDMI output	1 (1920 x 1080)	
	TV output	1 (supports multi-quad output)	
	spot output	-	
audio	input	via IP camera	
	output	1 line-out	
MIC	input	1 line-in	
	sensor (alarm) input	4	
alarm	relay output	2 (NO/NC)	
	network	Ethernet (RJ45)	
connection	e-SATA	1	
	RS-232RS-232	-	
	RS-485	1 set (Tx+, Tx-, Rx+, Rx-)	
	USB 2.0	3 (2 ports on front panel, 1 port on rear panel)	
general			
electrical	power input	48W power adapter, DC 12V	
environmental	operating temperature	0°C ~ 40°C	
	operating humidity	90% RH	
mechanical	dimensions (W x H x D)	245 x 50 x 160 mm	
	weight (net)	0.8 kg	



E5000-Series		E5016	E5016H
applications	Powerful NVR designed for medium- to large-scale projects E.g. department stores and supermarkets		Powerful NVR designed for medium- to large-scale projects E.g. department stores and supermarkets
feature overview	<ul style="list-style-type: none"> PC-like performance with the stability of Linux Impressive 120 Mbps throughput rate Intuitive, easy-to-learn standardized GUI design Intelligent streaming support 		<ul style="list-style-type: none"> PC-like performance with the stability of Linux Impressive 120 Mbps throughput rate Intuitive, easy-to-learn standardized GUI design Intelligent streaming support
system			
operating system	embedded Linux		embedded Linux
total channel number	16		16
max. IP camera input	16		16
max. analog camera input	N/A		16
performance			
display (analog)	N/A		480 / 400fps (NTSC/PAL)
display (IP)	2M @ 120fps		2M @ 120fps
recording (analog)	compression	N/A	
	resolution	N/A	
	frame rate (NTSC/PAL)	N/A	
recording (IP)	resolution	up to 5 megapixels for one channel, and a total of 32 megapixels for all channels in H.264 / MPEG-4 / MJPEG format	
throughput	120 Mbps		512 Mbps
storage	internal HDD capacity	4 SATA HDDs (4 removable HDD trays)	
	internal RAID support	yes (level 0, 1, 5, 10)	
	external HDD support	e-SATA HDD or RAID x 1	
	iSCSI input	1 target, 4 lun	
backup	internal DVD-RW	- (supports external DVD-RW)	
interface			
monitor	VGA output	1 (1920 x 1080)	
	HDMI output	1 (1920 x 1080)	
	TV output	1 (supports multi-quad output)	
	spot output	-	
audio	input	via IP camera	
	output	1 line-out	
MIC	input	1 line-in	
	sensor (alarm) input	16	
alarm	relay output	4 (NO/NC)	
	network	Ethernet (RJ45)	
connection	e-SATA	1	
	RS-232RS-232	1 (D-sub 9 pins, male)	
	RS-485	1 set (Tx+, Tx-, Rx+, Rx-)	
	USB 2.0	3 (2 ports on front panel, 1 port on rear panel)	
general			
electrical	power input	90W power adaptor, DC 19V	
environmental	operating temperature	0°C ~ 40°C	
	operating humidity	90% RH	
mechanical	dimensions (W x H x D)	430 x 105 x 410 mm	
	weight (net)	8 kg	



P5000-Series		P5036-R	P5036-16-R
applications	Powerful NVR designed for large-scale projects E.g. large parking lots or malls		Powerful NVR designed for large-scale projects E.g. large parking lots or malls
feature overview	<ul style="list-style-type: none"> PC-like performance with the stability of Linux 40TB of internal storage 36CHs preview & playback simultaneously 		<ul style="list-style-type: none"> PC-like performance with the stability of Linux 40TB of internal storage 36CHs preview & playback simultaneously
System			
operating system	embedded Linux		embedded Linux
total channel number	36		36
max. IP camera input	36		36
max. analog camera input	N/A		16
Performance			
display (analog)	N/A		480/400fps
display (IP)	2M @ 600fps		2M @ 600fps
recording (analog)	compression	N/A	
	resolution	N/A	
	frame rate (NTSC/PAL)	N/A	
recording (IP)	resolution	1. Single channel is 5 megapixels maximum 2. Total 72 megapixels maximum	
throughput	512 Mbps		512 Mbps
storage	internal HDD capacity	10 SATA (8 swappable)	
	internal RAID support	RAID 0,1,5,10	
	external HDD support	Via iSCSI	
	iSCSI input	1 target, 4 lun	
Interface			
monitor	VGA output	1 (up to 1920 x 1080)	
	HDMI output	1 (up to 1920 x 1080)	
	TV output	N/A	
	spot output	N/A	
audio	input	N/A	
	output	1 line-out	
MIC	input	1 line-in	
	sensor (alarm) inputs	8	
alarm	relay output	4 (NO/NC)	
	network	Ethernet (RJ45)	
ports	RS-232	1 (D-sub 9 pins, male)	
	RS-485	1 set (Tx+, Tx-, Rx+, Rx-)	
	USB 2.0	2 on front and 1 on rear	
	USB 3.0	1 on rear	
General			
electrical	power input	500W power adaptor, DC 12V	
environmental	operating temperature	0°C ~ 40°C (32°F ~ 104°F)	
	operating humidity	90% RH	
mechanical	dimensions (W x H x D)	17.2"x3.5"x21" (437x88.9x533.4mm)	
	weight (net)	10.69kg	

Optimized Recording Mode

Optimized Recording Mode has been designed for AVer's P Series and E Series network video recorders and allows users to store data in a more efficient manner, resulting in substantial savings and increased efficiency. Optimized recording mode enables users to decide at what resolution they want to record data at during different periods. This is extremely beneficial to users because it allows them to reduce costs by allowing data to be recorded and stored for a much longer period, without having to purchase additional hard drives for storage. The table below illustrates different hard drive storage sizes and recording settings, showing you how to increase your storage capacity over 4 times.

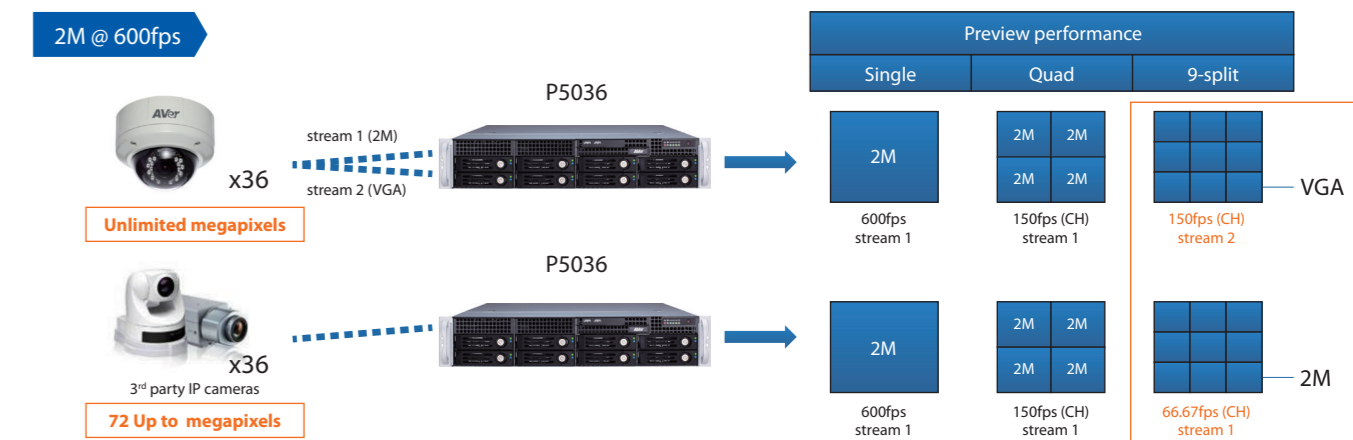
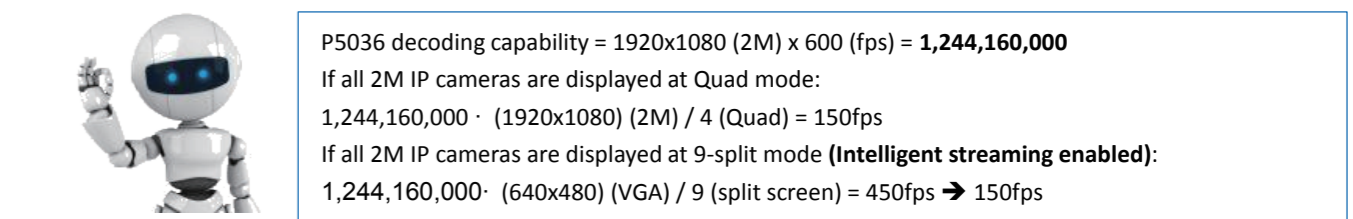
HDD	16TB	20TB	32TB	40TB
General way				
Auto recycle	7 Days	9 Days	14 Days	18 Days
Enable AVer optimized recording mode				
Use 2M for 7 Days VGA for rest of days	7 Days	14 Days	36 Days	57 Days
Use 2M for 5 Days VGA for rest of days	8 Days	18 Days	50 Days	71 Days

Based on 36 x 2M (6Mbps) cameras

AVer's NVRs Decoding capability

All of AVer's NVRs provide excellent decoding capability ensuring that when you connect IP cameras to our NVRs, you will see smooth live preview. This allows users viewing the footage to keep a close eye on events as they unfold and minimize the chance of an incident being overlooked or missed due to poor camera footage. The diagram below provides an overview of the decoding capability of our latest P Series NVRs in operation.

- Example, P5036 preview is 2M @ 600fps
- Intelligent streaming function is automatically enabled at 9-split display mode to ensure VGA resolution at 150fps preview quality (with AVer IP cameras)



Mobile Control and Access

- Support for iPad, iPhone, Android phone and tablet
- Single or multi-channel live monitoring anytime and anywhere
- Savable profiles for fast connection during future use
- Remote PTZ camera control
- Remote download and playback of selected video footage
- 2-way audio available for NVRs

